

IN ILLUSTRATOR (example made with cs3):

Type the desired word and select the character you wish to change. Upon opening the glyph panel there are four options: alternates for current selection, entire font, set ss01 or set ss02 (image 1).

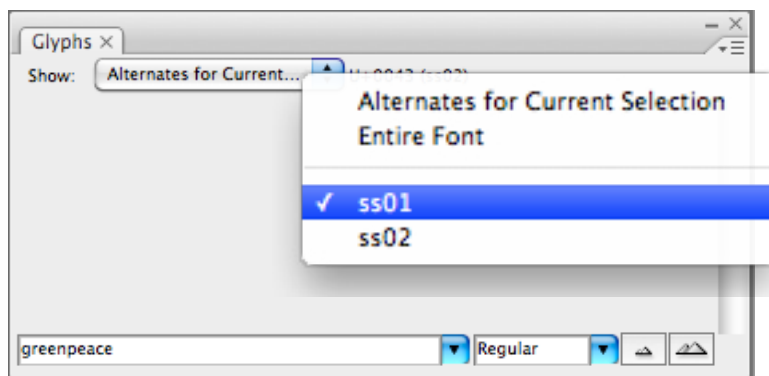


Image 1

Option 1 - Entire font: After selecting “Entire Font” you are presented with the entire glyph set of the typeface. From there, you can pick up the glyphs you want. (image 2)

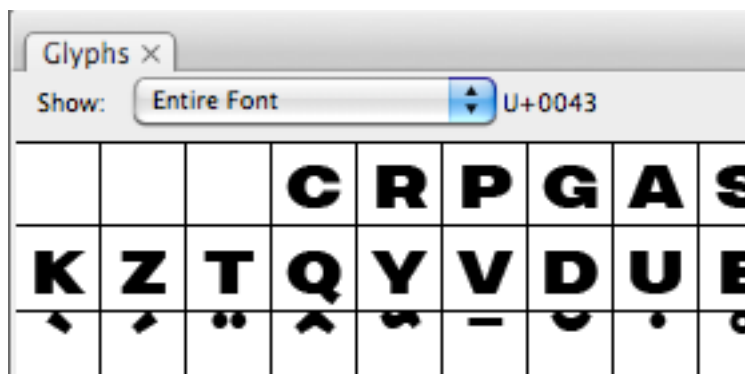


Image 2

- Alternates for current selection: This option allows you to see the alternative glyphs for the character in your selection. Ex. : Selecting a “C” will present two more designs for “C”. (image 3)



Image 3

IN ILLUSTRATOR (example made with cs3):

Option 3 and 4 - ss01 and ss02:
 This typeface features a plain A-Z character set and two more illustrated A-Z sets, named ss01 and ss02 respectively. This option allows you to see all the glyphs in each set. (image 4 and 5)

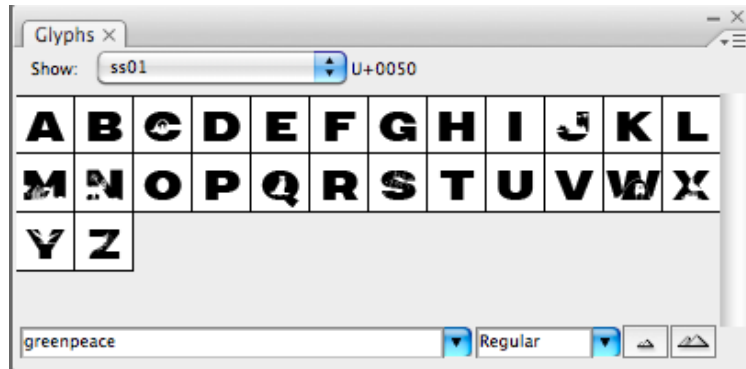


Image 4

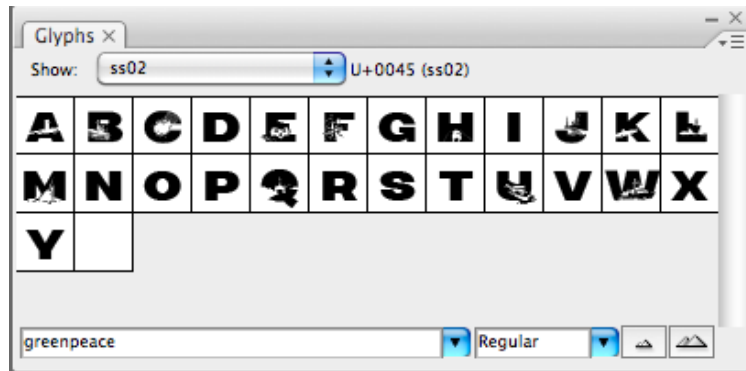


Image 5

IN INDESIGN (example made with cs3):

Following the same principle, the glyph window in In Design, presents the same options, apart from “Alternates for current selection”.

Indesign features some additional options that allow the replacement of all selected characters with those of another set. This is achieved by switching sets, as seen in image 5.

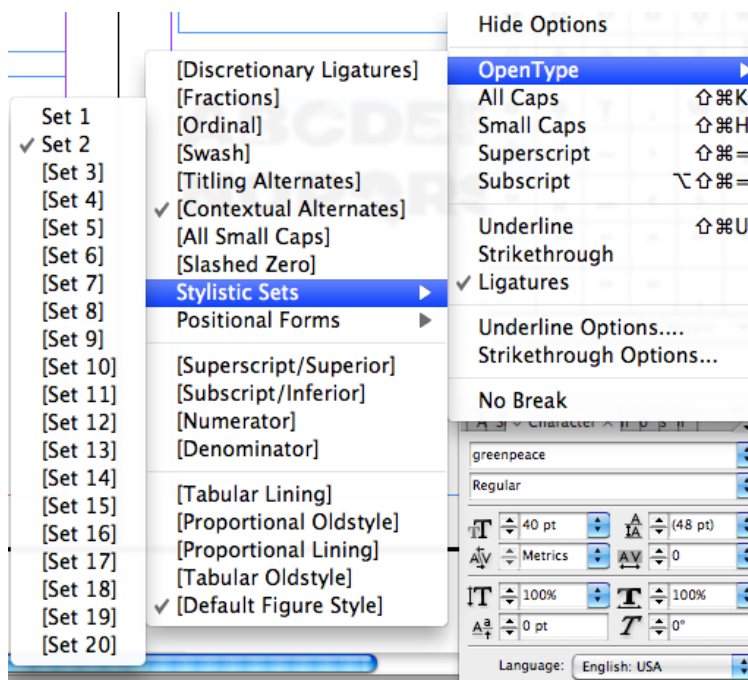


Image 6

**ABCDEFGHIJKLM
NOPQRSTUVWXYZ**

A_Z plain character set

**ABCDEFGHIJKLM
NOPQRSTUVWXYZ**

SSo1

**ABCDEFGHIJKLM
NOPQRSTUVWXYZ**

SSo2

**.,...;!i?¿“,”“”,”“”<><<>>
— — — — — \#&[]{}()~*~|!**

Punctuation

À Á Â Ã Ä Å Æ Ā Ą
Ą Ǽ Æ Ć Ĉ Ċ Č Ď
Đ È É Ê Ë Ē Ę Ě Ğ
Ġ Ģ Ģ Ħ Ĩ Í Î Ï Ī
İ Ĵ Ĵ Ĵ Ĵ Ĵ Ĵ Ĵ
Ń Ń Ń Ń Ń Ò Ó Ô Õ Ö
Ø Ø Ò Œ Ù Ú Û Ü Ý
Ɔ Ǫ Ǫ Ǫ Ǫ Ǫ Ǫ Ǫ
Ɔ Ū Ū Ū Ū Ū Ū Ū
Ŵ ŵ Ŷ ŷ Ÿ Ź Ź Ź